



CONNERS

Comprehensive Behavior
Rating Scales™ **Conners CBRS®**

C. Keith Conners, Ph.D.

ASSESSMENT OF
**SOCIAL, EMOTIONAL,
BEHAVIORAL AND
ACADEMIC DIFFICULTIES**
IN YOUTH AGED
6 TO 18 YEARS



CONNERS

As always. As never before.™



MHS

Beyond Assessments

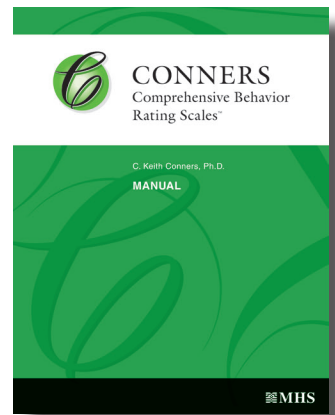
What is the **Conners CBRS**?

In a world that is getting increasingly complex, today's clinician needs more than just disorder specific assessments in their tool kits. What do you do if you aren't sure what a child's primary concern is? Where do you turn if you suspect multiple variables may be at play with your patient? What tool do you reach for when you need to know more than just a youth's symptoms? The Conners Comprehensive Behavior Rating scale (Conners CBRS) was developed to answer these questions. Designed to be a broad spectrum assessment, it provides a comprehensive overview of social, emotional, behavior, and academic concerns and disorders in children ages 6-18. It's the ideal tool to use as the foundation of any battery, providing insight into a wide-range of symptoms and their severity. The test can be used at the assessment stage for screening, classification, diagnostic, or research purposes as well as throughout the intervention stage as it informs program evaluation, treatment planning, and progress monitoring.

How is it different from other broadband measures?

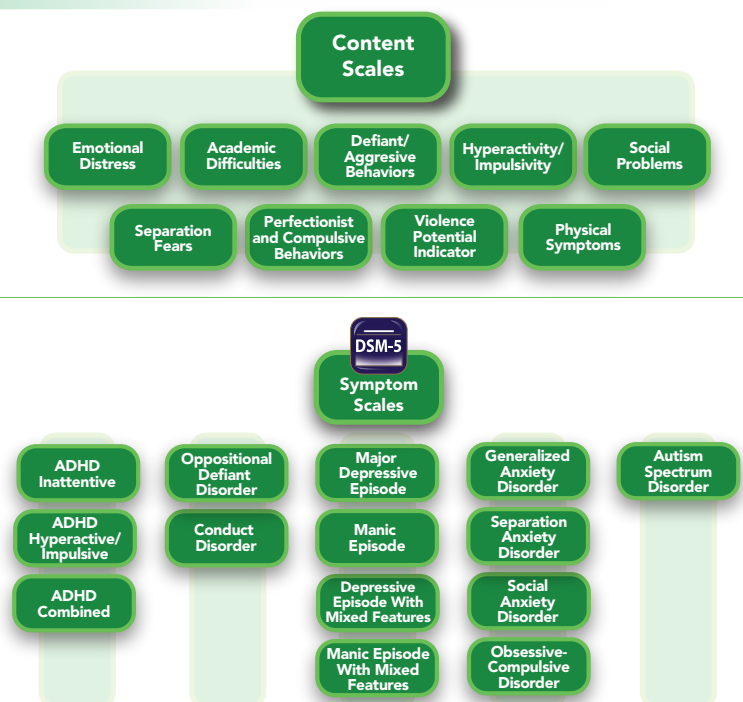
The Conners CBRS is an excellent first step in a youth assessment. It was developed to provide comprehensive clinical coverage and in-depth analysis for a very broad array of clinical conditions. The Conners CBRS includes assessment of common constructs of psychopathology as well as scales that relate directly to symptom level diagnostic criteria of the DSM-5. The assessment is also linked to IDEIA to help evaluate and identify student needs in an educational setting and whether they qualify for special education services. Impairment items are also included to assist with diagnosis and the functioning of the child in daily life across home, school, and social settings. The Conners CBRS is used as part of the initial evaluation and can be used to follow up on a child's behavioral patterns and track efficacy of an intervention or treatment. It provides insight into areas of deficit that may require a deeper dive using a narrow-band assessment tool, one designed specifically for a given set of symptoms such as the Conners 3 for ADHD, ASRS for ASD, MASC 2 for anxiety, or CDI 2 for depression.

Because the test focuses on social and emotional issues, as well as behavioral ones, the Conners CBRS provides a complete characterization of the child making it an essential component of your assessment tool kit.



More than a **DSM diagnostic tool**

The Conners CBRS is more than just a DSM based rating scale. It includes content scales as well as symptom scales to ensure the assessment is capturing a holistic view of a children's functionality. While some Conners products are specifically ADHD focused, such as the popular Conners 3 and Conners Adult ADHD Rating Scales, the Conners CBRS is not meant to be solely an ADHD diagnostic tool. Instead, the flexibility and range of the Conners CBRS identifies presence and severity of issues across nine content areas and eleven diagnostic areas including ADHD and Autism Spectrum Disorder, as well as disruptive behavior, mood, and anxiety disorders.



About the **Conners CBRS®**

The Conners Comprehensive Behavior Rating Scales™ (Conners CBRS™) is designed to provide a complete overview of child and adolescent concerns and disorders. It is a multi-informant assessment of children and youth across multiple settings, with rating forms for parents, teachers, and youth.

The Conners CBRS provides a wealth of information with Diagnostic and Statistical Manual of Mental Disorders, Fifth Edition (DSM-5™) Symptom Scales, Content Scales, Other Clinical Indicators, Critical Items, and Impairment Items.

Quick Reference

Age

Parent and Teacher: 6-18

Self-Report: 8-18

Number of Items

Conners CBRS-Parent: 203

Conners CBRS-Teacher: 204

Conners CBRS-Self-Report: 179

Conners CI-Parent: 24

Conners CI-Teacher: 24

Conners CI-Self-Report: 2

Administration Type

Parent-completed

Teacher-completed

Youth-completed

Administration Time

Conners CBRS: 25 minutes

Conners CI: less than 5 minutes

Translations

Spanish

Qualification Level

B-level

Formats

Online (administration and scoring)

Reading Level

Parent, Teacher, and Youth:

3rd through 5th grade

KEY FEATURES

- **Identify students for potential eligibility in special education** programs by determining the presence of social, emotional, behavioral, or academic difficulties
- **Develop informed intervention and treatment strategies** with information on a broad range of childhood disorders and concerns
- **Monitor response to intervention and its effectiveness** with detailed progress reports
- **Gain clarity by using one of the most comprehensive behavior ratings scales available**, allowing for identification of comorbid disorders that assist with differential diagnosis
- **Easily administer, score, and interpret results** with a user friendly design
- **Quickly screen and monitor treatment** with the Conners Clinical Index (Conners CI)
- **Gain a multi-rater perspective of the youth's difficulties** with a Parent, Teacher, and Self-report version

ABOUT THE AUTHOR Dr. Keith Conners

C. Keith Conners, Ph.D., had an extraordinary and diverse career as an academic, clinician, researcher, lecturer, author, editor-in-chief, and administrator. His dedication to the study of ADHD and other childhood problems propelled him to the forefront of his field where he was often called, "the father of ADHD." He was highly recognized in the field of psychology by his numerous contributions and left behind a lasting legacy of work.



A Highly Representative Normative Sample

Over 7,000 assessments were collected in the development of the Conners CBRS and Conners CI, including ratings of children and youth for the normative sample, clinical cases, and for the validity studies. In the normative study, 3,400 Conners CBRS assessments were collected. The large normative data sample is representative of the general U.S. population in terms of ethnicity/race, gender, and age (U.S. Bureau of the Census, 2000). The normative sample is also diverse in terms of parental education level and geographic region.

Separate norms are provided for male and female children and youth in 1-year age intervals. Combined gender norms also are available.

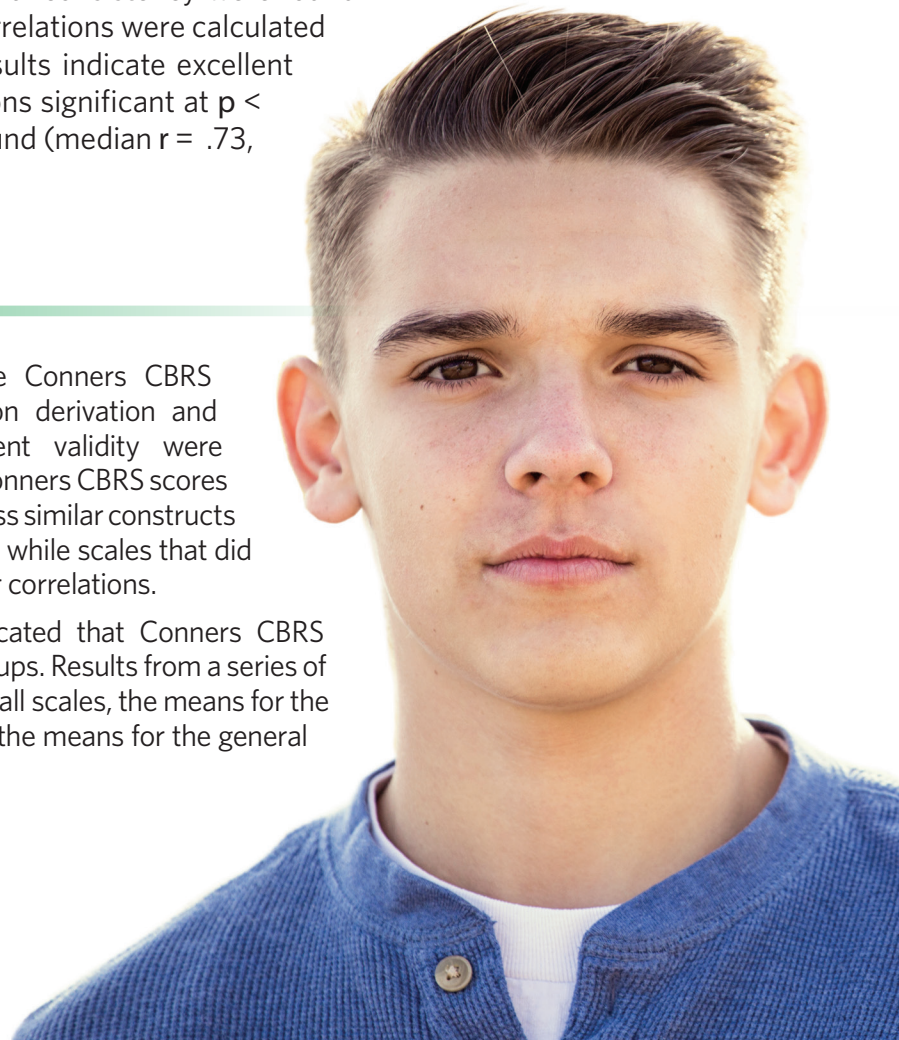
Reliability

A series of studies revealed strong evidence of reliability for the Conners CBRS across a variety of metrics. High levels of internal consistency were found (median Cronbach's $\alpha = .87$). Test-retest correlations were calculated for scores over a 2- to 4-week interval and results indicate excellent temporal stability (median $r = .83$, all correlations significant at $p < .001$). Finally, strong inter-rater reliability was found (median $r = .73$, all correlations significant at $p < .001$).

Validity

Support for the validity of the structure of the Conners CBRS was obtained using factor analytic techniques on derivation and confirmatory samples. Convergent and divergent validity were supported by examining the relationship between Conners CBRS scores and other related measures. Overall, scales that assess similar constructs tended to be moderately to strongly intercorrelated, while scales that did not assess similar constructs tended to have smaller correlations.

Results from discriminative validity analyses indicated that Conners CBRS scores accurately discriminate between relevant groups. Results from a series of multivariate analysis of covariance revealed that, for all scales, the means for the target clinical groups were significantly higher than the means for the general population and other clinical groups.

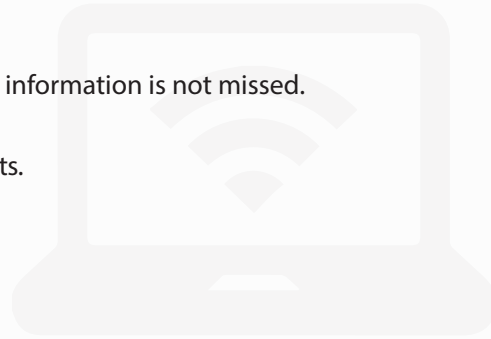


CONNERS CBRS® Online!

Assessing online has never been easier with the new MHS Online Assessment Center+. Experience the new online platform designed with clinicians for clinicians to ensure the **easiest, fastest, and most accurate** assessing possible.

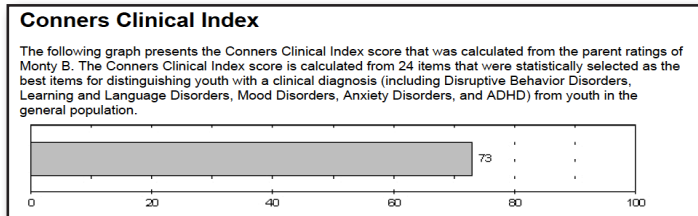
Why Use the Conners CBRS® Online? Online

- ✓ **Save Time**
Fast, easy, and accurate administration with automated scoring.
- ✓ **Assess and Score from Anywhere**
View reports with an online connection.
- ✓ **Improve Efficiency and Accuracy**
When items are absent, prompts appear to ensure information is not missed.
- ✓ **User-Friendly**
Easy to use interface for practitioners and respondents.
- ✓ **Gain Information Easily**
Email a link to the form directly to the respondent.
- ✓ **Tailored Organization**
Data can be customized to how you work.

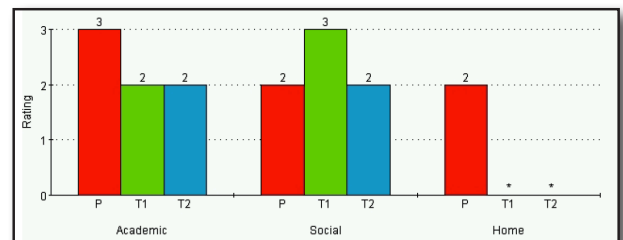


Three Valuable Report Options With Each Evaluation

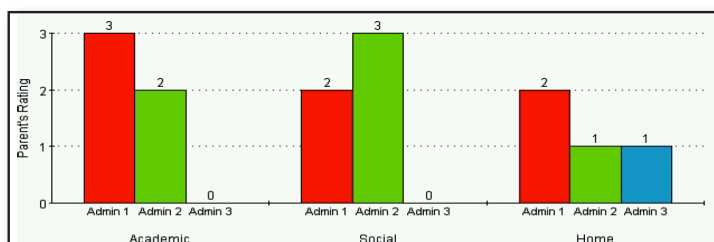
1. The **Interpretive Report** provides information about a single administration.



2. The **Comparative Report** provides a multi-rater perspective by combining results from up to five different raters.



3. The **Progress Monitoring and Treatment Effectiveness Report** combines results from up to four ratings over time by the same rater.



CONNERS

As always. As never before.™

For more information and pricing
please scan the QR code.



Easy ways to order

@ customerservice@mhs.com



USA 1.800.456.3003
CAN 1.800.268.6011
INTL 1.416.492.2627