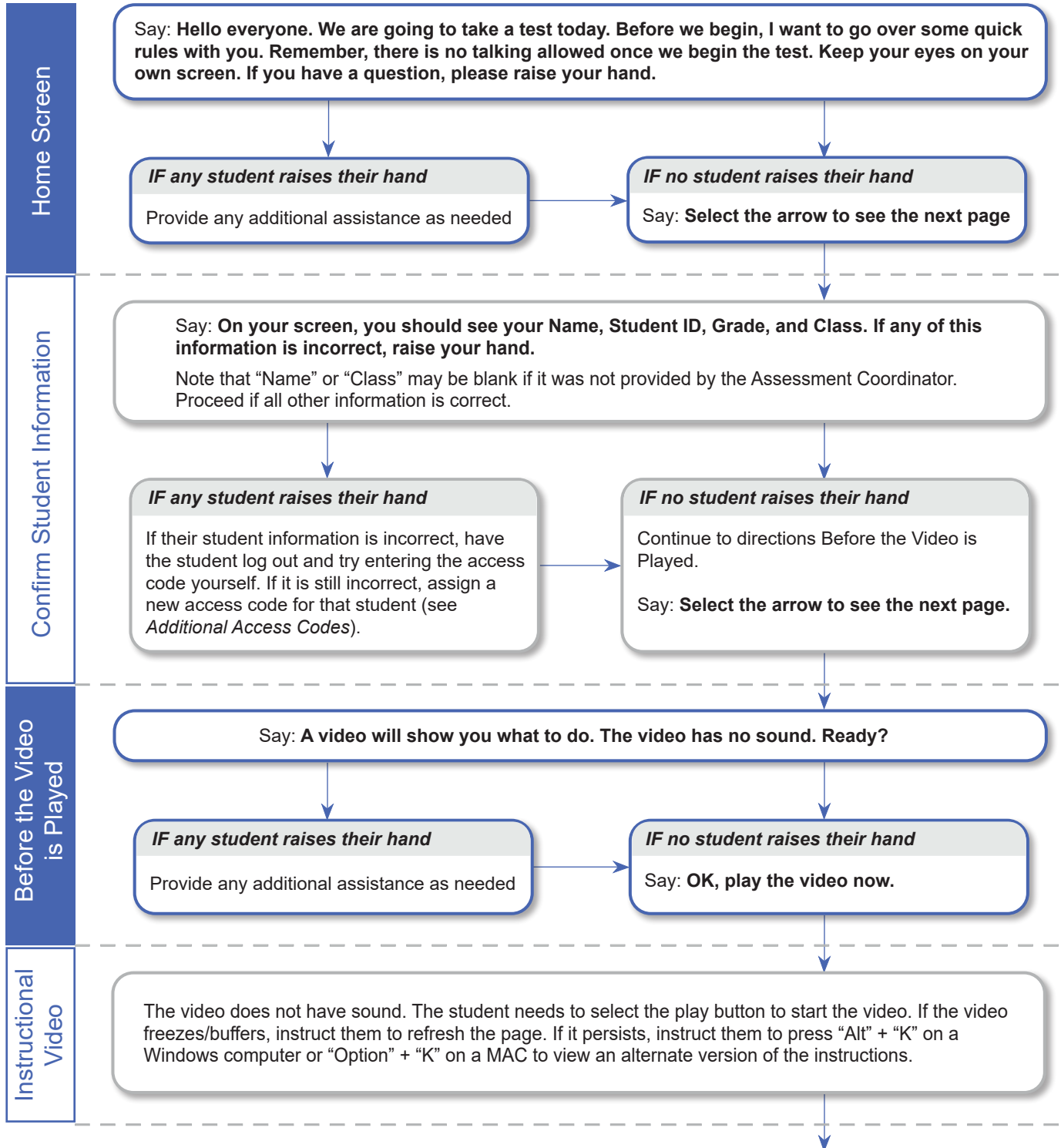
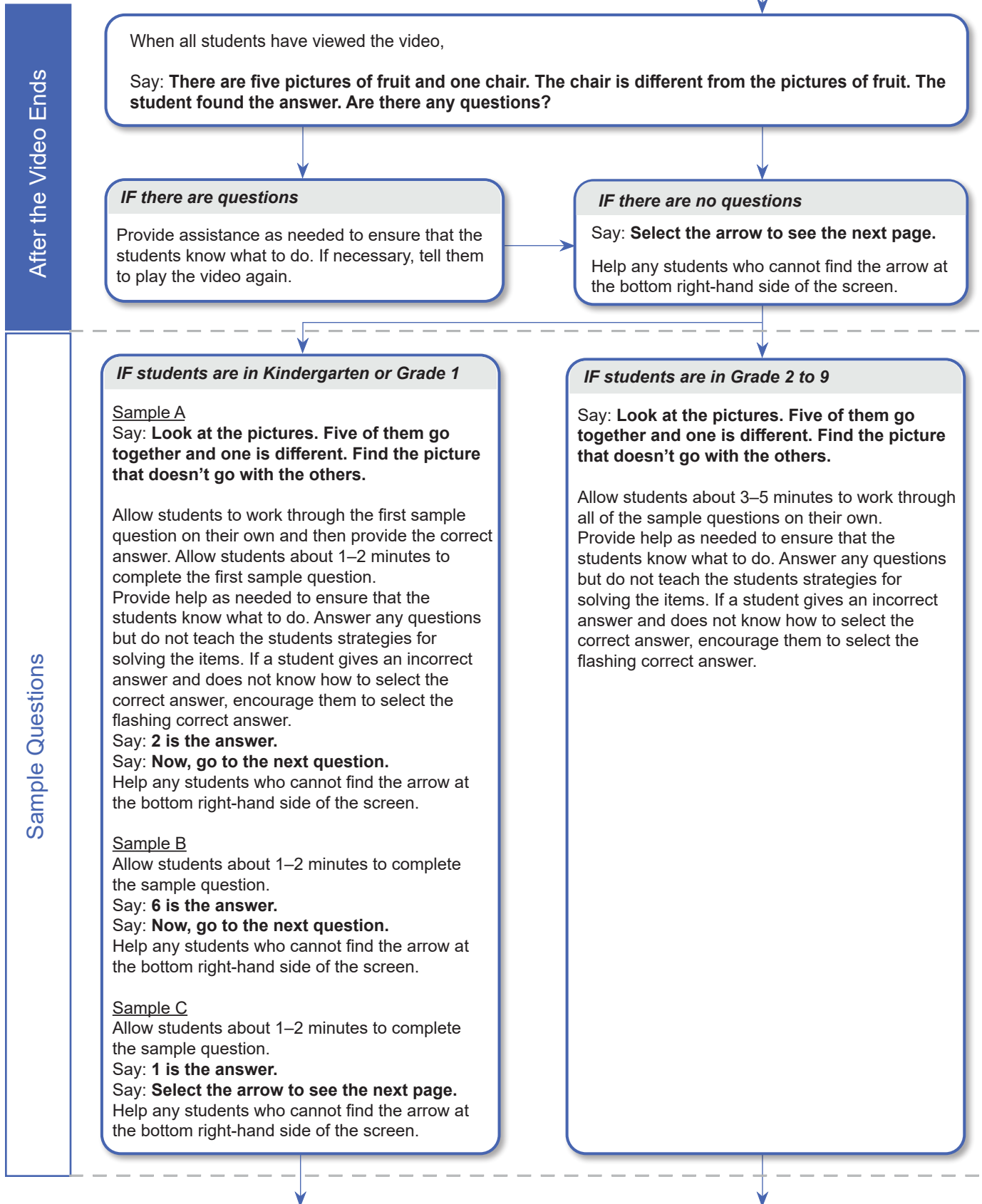


Naglieri-V Directions

The directions include (a) logistical instructions and (b) the Test Administrator’s verbal directions. The script to be read aloud is the **black bolded text** and must be presented exactly as written.





Starting the Test

Say: **There are 40 questions. Look at each one carefully and pick the best answer, even if you are not sure. If you want to change your answer, select the back arrow. You have X minutes (X = 30 minutes for Kindergarten to Grade 2; X = 35 minutes for Grade 3 to Grade 9) to complete the questions. If you finish early, you will see two arrows. Use the back arrow to review your answers or the forward arrow to finish. When you finish, please raise your hand and I will come to you.**

Say: **Are there any questions?**

IF there are questions

Provide assistance as needed to ensure that the students know what to do. Answer any questions but do not teach the students strategies for solving the items.

IF there are no questions

Say: **OK, select the blue arrow to begin.**

Help any students who cannot find the start arrow at the bottom right-hand side of the page.

Keep note of the start time so you have an idea of when students will reach the time limit. You can write the start time and end time on a board visible to all students. Students will work through the test questions on their own. Each test consists of 40 questions, with 1 question per screen.

Notes for the Test

IF the test ends before the time-limit expires

If the student completes the test before the time limit, a "Review Screen" with a back arrow and a forward arrow will be displayed.

If they select the back arrow, the students will be able to go back and review and change their answers.

To end the test, the student must select the forward arrow. Ensure that they arrive on the "Submit Screen." Tell students to wait for the rest of the class to finish the test. Students may work on any alternative activities at this time.

Note that the next arrow on this screen does not appear until 5 minutes after the student has submitted their test. This is to ensure students do not move onto the next test ahead of the group. This will occur independent of the time left on the timer. Students should be given at least a 5-minute break before starting a new test.

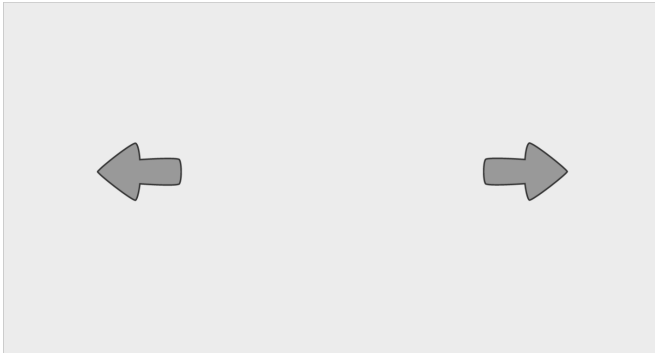
IF the test ends after the time-limit expires

If students reach the time-limit, they will automatically be directed to the "Submit Screen."

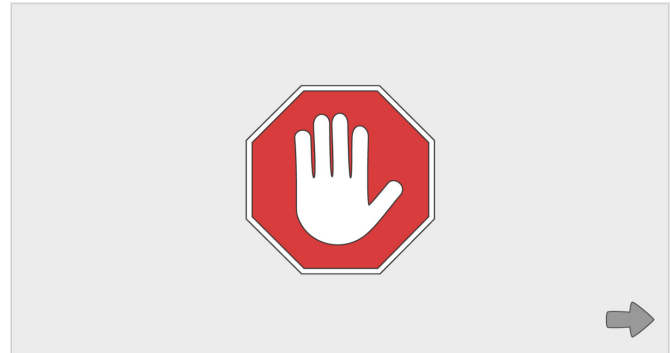
Note that the next arrow on this screen does not appear until 5 minutes after the student has submitted their test. This is to ensure students do not move onto the next test ahead of the group. This will occur independent of the time left on the timer. Students should be given at least a 5-minute break before starting a new test.

IMPORTANT: For students completing the test before the time-limit, the test will only be submitted once the student lands on the "Submit Screen."

Review Screen:



Submit Screen:



IF continuing with the next test in the same testing session

If students will continue with the next test in the same testing session, it is recommended that a small break be provided at this time. Upon returning from their break, ensure students are sitting at the same devices where they were seated for the previous test and are still logged in. Tell them to select the forward arrow at the bottom right-hand side of the page on the "Submit Screen". All students will be brought to the "Home Screen" with the next test enabled. Refer to the directions for the next test (see *Naglieri-Q Directions* or *Naglieri-NV Directions*).

Say: **Now we will continue with the next test.**

IF continuing with next test at a different time and/or day

If students are scheduled to continue with the next test in a different testing session (different time and/or day), tell them to close the browser. When students log in again for their next testing session, they will return to the "Home Screen" with the next test enabled.

Tell them to return their slips with the assigned access codes to you. You must collect these codes and return them to the students at their next testing session.

IF all assigned tests have been completed

A "Thank you" page will appear and there will be no forward arrow at the bottom right-hand side of the screen.

Tell students to close their browser. Gather their access codes and responsibly dispose of them at this time.